

# breakfast

**Fresh Fruit Bowl** (v) | 9

**Mochi Waffle**, (gf, v) whipped butter, maple syrup | 10

**Keiki Breakfast Plate**, soft scramble, Portuguese sausage, fried rice | 12

**Mini Loco Moco**, Honolulu Meat Co. mini beef patty, egg, gravy, white rice | 12

# lunch & dinner

**Keiki Pasta**, (v) fresh pasta, San Marzano tomato sauce, parmesan | 12

**Garlic Chicken**, broccolini, white rice | 12

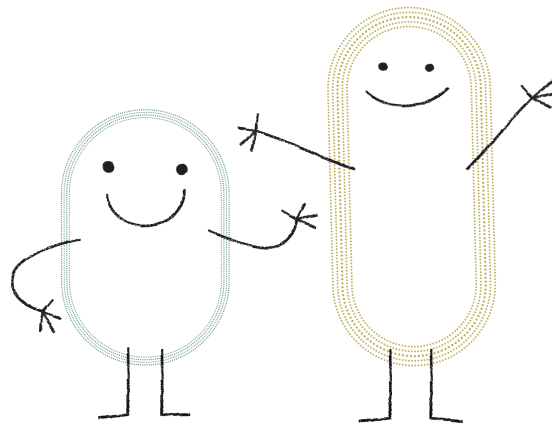
**Kids Sliders**, Honolulu Meat Co. mini beef patties, American cheddar, fresh cut fries | 12

**Cheese Pizza**, (v) Italian five blend, San Marzano tomato sauce | 12

# sweet tooth

**Fresh Baked Cookies A La Mode** (v) | 7

**Brownie A La Mode** (v) | 7



Available to children up to 12 years

[etalhawaii.com](http://etalhawaii.com)

[@etalhawaii](https://www.instagram.com/etalhawaii)

(808) 732-2144

# et al.

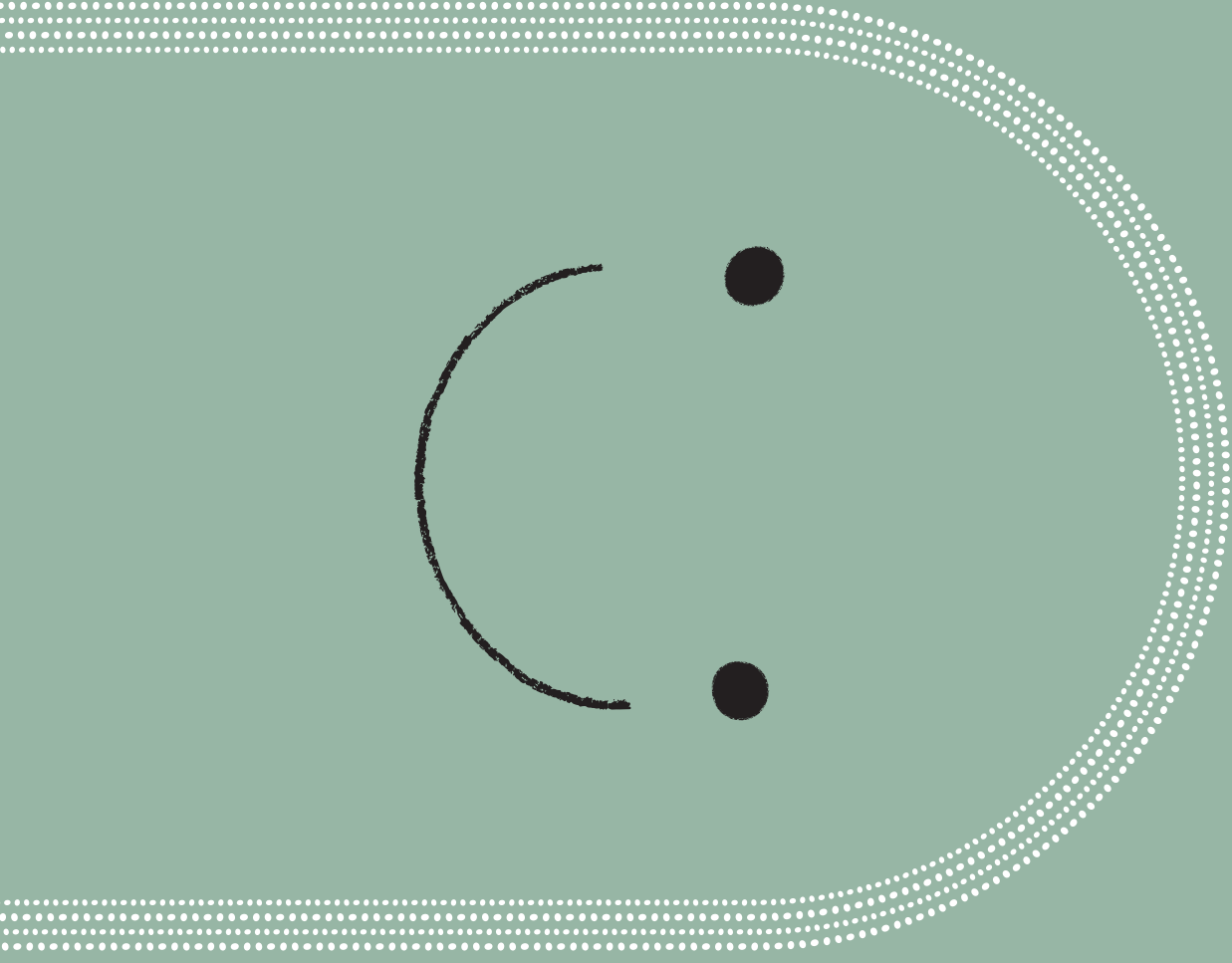
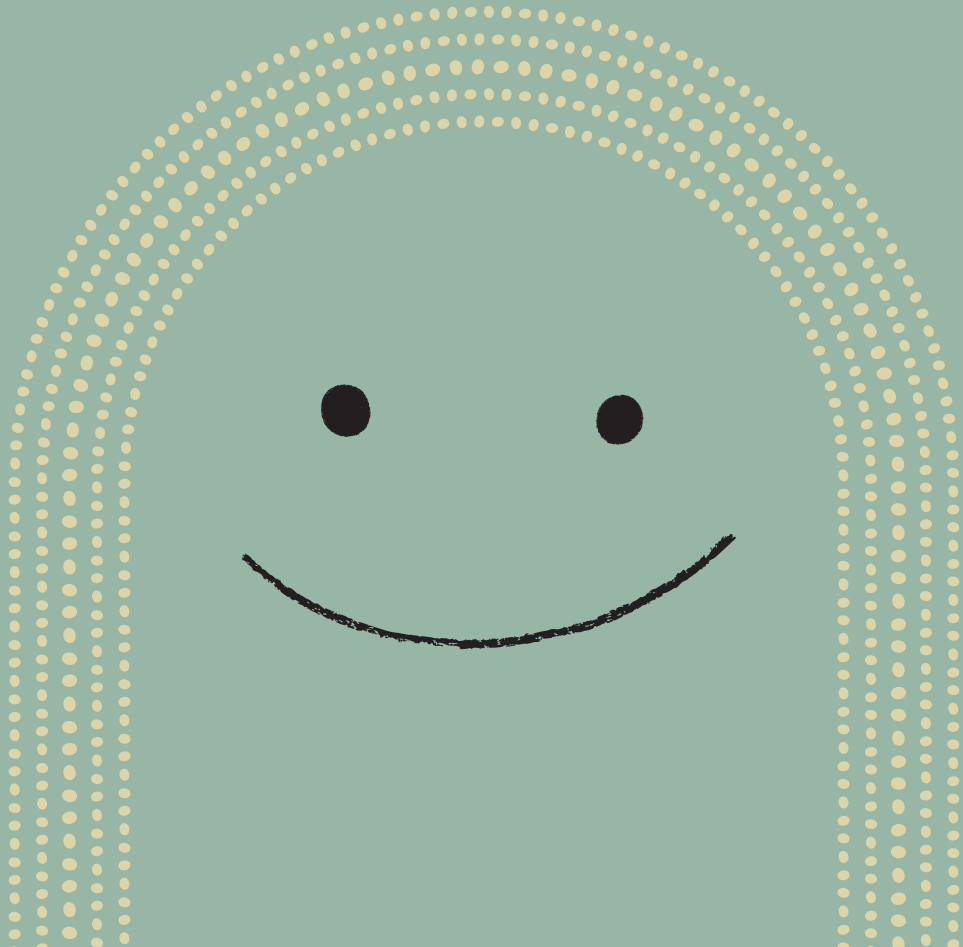
Neighborhood Eatery

Breakfast, Lunch, Dinner & More

*We proudly serve local ingredients. Consuming raw or undercooked foods may increase your risk of foodborne illness. Menu items are cooked in the same kitchen and therefore may contain or come into contact with wheat, milk, eggs, peanuts, fish, shellfish, soy, and tree nuts. Before placing your order, please inform your server if a person in your party has a food allergy.*

gf = Gluten Free    v = Vegetarian    v+ = Vegan

A gratuity of 18% will be charged to parties of 6 or more



*KEIKI et al.*